

FAQ – Questions and Answers



SCCPSS In-Person Plan A Phased Hybrid

Approach: SCCPSS has created a plan for the return of students (those *who choose to do so*) in a limited hybrid (two days in-person, three days online each week) format.

*****Virtual Learning will be Available for Families in all phases*****

*****In-Person Options Available based on Staffing Availability*****

PHASE I: VIRTUAL LEARNING MODEL / AUG. 19 - OCT. 5

- WHO? All students (Prek-12)
- LEARNING MODEL: Virtual

PHASE II: LIMITED HYBRID IN-PERSON MODEL // STARTS OCT. 5

- WHO? Least Independent Learners (**those previously identified by Specialized Instruction), PreK-2nd grade students, 6th grade students, first-time 9th grade students
- LEARNING MODEL: In-Person (Hybrid) and Virtual Offered

**LEAST INDEPENDENT LEARNERS (LIL) are students who are identified as having a relatively high need for in-person educational services compared to other students based on their particular educational needs. LIL students include those served through certain programs including •Language Enriched Autism Program (LEAP) •Pre-School Intervention •JumpStart •Preparing Students with Autism for Classroom Education (PACE). Students who receive educational services based on Moderate/Severe/Profound Intellectual Disability eligibility are also presumed eligible for LIL status.

- IEP and 504 teams may designate any student with the LIL status based on that student's particular educational needs.
- The designation of LIL status does not guarantee that a student will receive in-person educational services.

PHASE III: EXPANDED HYBRID IN-PERSON MODEL // OCT. 26 (Tentative)

***For this phase, the Board Resolution cites a tentative date of October 26th for the Expanded Hybrid plan. This date is contingent on COVID-19 transmission levels – see yellow/green acceptable risk levels.*

- WHO? All students (Includes the addition of grades 3-5, 7, 8, 10-12)
- LEARNING MODEL: In-Person (Hybrid) and Virtual Offered

PHASE IV: IN-PERSON RETURN Tentative return (Requires Green Risk Level)

Phase IV includes a four day in-person model with one day at home online. The "at home day" will allow for deep cleaning and sanitation procedures at all sites across the district.

- WHO? All students (PreK-12)
- LEARNING MODEL: In-Person and Virtual Offered

NOTE: Phased In-Person Learning Plan is subject to change based on community health conditions and/or Board action.

FAQ – Questions and Answers

Data Drives Dates: Phased Approach

SOURCE: Georgia Department of Health, Coastal Health District <https://covid19.gachd.org/community-transmission-index/>

Virtual (Phase I)	Hybrid - Limited (Phase II) Proposed: September 28 - October 2 New K Registration & Orientations		Hybrid - Expanded: Add 3-5 and 7, 8 and 10 - 12 (Phase III – now includes PreK - 12) Tentative: October 26	In-Person Return (4 days of in-person and 1 day virtual for deep clean) Grades PreK – 12 (Phase IV)
	Proposed: October 5 PreK – 2, Least Independent Learners Grade 6 & First-time Grade 9 Cohorts			
Red COVID Risk Level		Orange COVID Risk Level	Yellow COVID Risk Level	Green COVID Risk Level
Online Learning (Learning packets available as requested.)	Combined participation in online learning and in-person learning		Combined participation in online learning and in-person learning	Combined participation in online learning and in-person learning

Remain in the Hybrid Model as long as it is safe to do so. When the transmission rate reaches the lowest risk level of green, all grade levels will have the option to remain in virtual learning.

Board Resolution and Meeting Link:

AMENDMENT TO THE MOTION: NOW, THEREFORE, BE IT RESOLVED that the Board of Education does hereby acknowledge and approve the actions taken by the Superintendent and administrators in preparation for the phased hybrid return of students to school and the re-opening of school buildings for the purpose of providing educational services; and the Superintendent is hereby authorized to implement the phased in-person hybrid learning option as stipulated by the enclosed guidelines for operation based on the Community Transmission Index and the Daily Case Rate per 100,000, for those families who choose this option and agree to the conditions associated with this specific instructional model, while other families may continue using the virtual learning model. Implementation of the phased in-person learning model will be subject to the constraints of time, building capacity, available staffing, and public health considerations/guidance, and;

BE IT FURTHER RESOLVED, that, due to changing facts and circumstances and the fluidity of the situation involving COVID-19, the Board authorizes the Superintendent and administration, after consultation with the Board, to further revise and refine the plans for implementation of the learning models (virtual, hybrid) if a change is so warranted by declining public health conditions and serves the best interest of the safety, health, and wellness of students and staff.

BOARD DOCS: <http://go.boarddocs.com/ga/sccs/Board.nsf/goto?open&id=BTGQF564F905>

MEETING VIDEO: <https://www.youtube.com/watch?v=W9IIIFXcUok>
Time Code: 3:27:45

COMMUNITY TRANSMISSION INDEX: <https://covid19.gachd.org/community-transmission-index/>
DAILY CASE RATE: <https://covid19.gachd.org/daily-case-rate-per-100000/>

NOTE: Phased In-Person Learning Plan is subject to change based on community health conditions and/or Board action.

FAQ – Questions and Answers

WHAT IS A HYBRID?

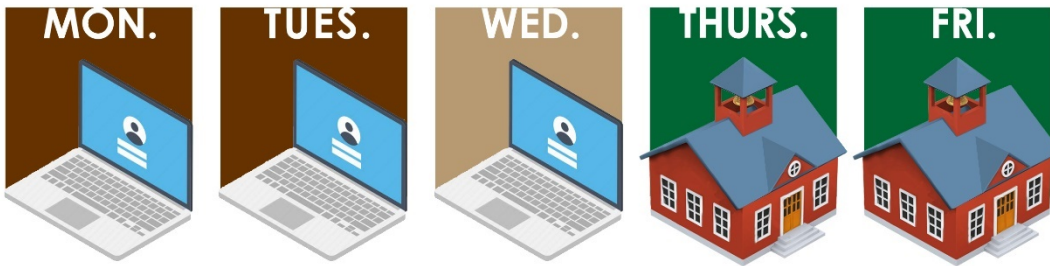
The phased return calls for a graduated approach that will include a hybrid model providing 2 days of in-person instruction and 3 days of virtual (Wednesdays remain a Deep Cleaning Day with no staff on site - only limited essential staff allowed).

SCHEDULE: There are 3 student groups – A, B, C

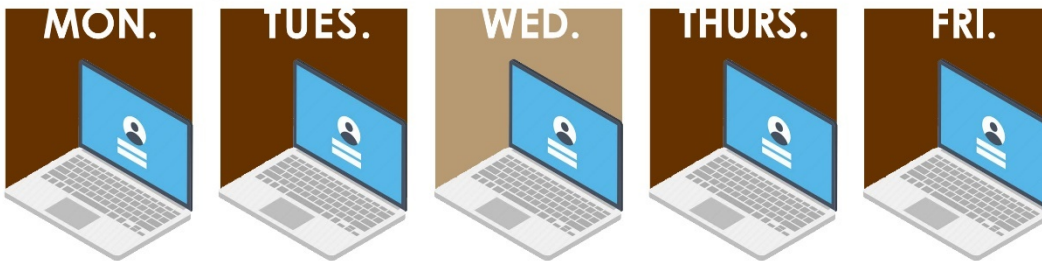
Student Group A



Student Group B



Student Group C



Wednesday remains Deep Clean day – all remote, no staff on site

SCHOOLHOUSE IMAGE = IN-PERSON FOR THOSE WHO CHOOSE IT
LAPTOP IMAGE = VIRTUAL, REMOTE LEARNING

District staff will work to the greatest extent possible to ensure siblings can be placed in the same cohorts to assist parents with planning.

NOTE: Phased In-Person Learning Plan is subject to change based on community health conditions and/or Board action.

FAQ – Questions and Answers

Will Transportation be Provided?

No. During the Phase II Return to Learn, Transportation will not be provided to all students. Transportation is provided for our Least Independent Learners who have been previously identified by Specialized Instruction.

Will Students be Required to Wear Masks?

Students must wear age-appropriate facial coverings (face mask or face shield) as directed during learning, in the hallways and common spaces (i.e. restrooms, library, etc.), except while eating/drinking.

Will the District Provide Mask and/or Face Coverings?

The District will have a limited number of masks available for those students who may have misplaced or forgotten them. Parents will be required to provide their own face covering for their children.

What if a student refuses to wear a mask?

Refer to the conditions for in-person learning that were stipulated prior to choosing the in-person learning model. If this condition is not suitable for the student, a virtual model of learning is available.

Once a parent chooses virtual or in-person – can they change their choice at a later date?

The change between virtual and in-person learning models will be considered at the end of the 9-week period and will be managed on a case by case basis. Special situations should be referred to the appropriate Associate Superintendent.

How will parents/guardians know the conditions for in-person learning?

Students and parents must view a video and sign an “understanding of safety and behavior expectations” document prior to beginning this phase.

How will we know when In-Person Phase III will begin?

A 30-day administrative review will be conducted to examine data as it relates to the phased approach grid and the respective transmission data points. The information will be shared for Board review and is based upon Community Transmission Index (CTI), Daily Case Rate, and CDC Guidelines

NOTE: Phased In-Person Learning Plan is subject to change based on community health conditions and/or Board action.

FAQ – Questions and Answers

What are the Conditions for In-Person Learning for students?

Conditions were shared as part of the family survey that was issued on 9/04/2020 and are included in the parent registration link for choosing in-person or virtual. They include:

- Understand the in-person learning option, if chosen, is contingent on staffing availability
- Participate in in-person learning activities/virtual sessions as instructed by school schedule
- Wear age-appropriate facial covering (face mask or face shield) as directed during learning, in the hallways and common spaces (i.e. restrooms, library, etc.), except while eating/drinking
- Practice physical distancing by having a 6-foot distance between classmates/people at all times (no movement of furniture)
- Agree to temperature checks and answering CDC-based screening questions
- Avoid sharing objects with other students (i.e. including water bottles, devices, writing instruments, books, etc.)
- Engage in regular handwashing for 20 seconds or frequent hand sanitizing
- Follow the directions of school employees
- Follow all school rules as outlined in the Savannah-Chatham County Public School System Student Code of Conduct
- Understand that your child's current teacher(s) may not remain as the child's current teacher(s)
- Understand that your child will be required to self-quarantine for 14 days if he/she is exposed to COVID-19 or lives with someone who tests positive for COVID-19
- Understand that should your child develop or display symptoms of COVID-19, you will be asked to keep your child out of school for a period up to 14 days
- Understand cohort groups remain consistent for ease of contact tracing (if needed)
- Follow staggered times for lunch pick up, recess, car drop off/pick up, and restroom breaks
- Understand there will be no before and after school care provided at any SCCPSS facility
- Students are expected to arrive and depart at their designated school bell times

FAQ – Questions and Answers

Will visitors be allowed entrance into schools?

Visitors will not be allowed unless they are performing business necessary for the operation of the school or are a parent/guardian with viable education related business that necessitates an in-person meeting. Parents who need to enter the schools may do so by appointment.

Other Precautions:

- Visitors will be limited to a designated area defined by the school unless they are doing business on campus necessary for the operation of the school.
- Visitors that are doing business on campus will have a temperature check and symptom check.
- When dropping off items for students, parents will drop items off at a pre-determined, designated area, drop off items, and exit the building.
- A visitor that has a temperature at or above 100.4 or has symptoms will not be allowed on campus and their company will be notified.
- Beginning Sept 28 any family requiring assistance with school registration may do so by appointment at the school using a designated area that has social distancing available. Registration assistance shall be made by appointment only. Families are encouraged to use the online option first and may also gain assistance at the SCCPSS Student and Family Service Center located at 400 East Broad Street in Savannah.

How will activities (like recess) that create opportunities for students to gather be managed?

Schools will follow staggered times for lunch pick up, recess, car drop off/pick up, and restroom breaks to mitigate high concentration. Specific to Recess:

To keep students safe and healthy, scheduling and cleaning protocols will be utilized.

Scheduling of Recess:

- Students will be assigned to a core group or pod.
- Designated play areas will be created.
- Staggered times will be implemented to eliminate large groups.
- Traffic flow will be managed to utilize multiple ingress and egress points.

Cleaning:

- Request custodial team spray down work areas, to include, but not limited to classrooms, media center, cafeteria and computer labs with industrial sprayer on the scheduled deep cleaning day.
- Staff will clean work areas, to include, but not limited to computer, desk, and writing utensils frequently.
- Ensure inner (classroom) bathrooms are sanitized after each use.
- Sanitize all high touch areas frequently, to include, but not limited to doorknobs, light switch, desktops, tables, chairs.

FAQ – Questions and Answers

Will teachers who have been teaching students virtually since August 19, remain with those students when in-person begins?

A student's current teacher(s) may not remain as the child's current teacher(s) during in-person instruction on the hybrid-models. However, the teacher(s) of record will remain through the first marking period.

Will a virtual option be offered throughout the school year?

Yes, a virtual learning option will be available in all phases for families who choose this option.

For students that are in-person on the hybrid model, will meals be offered in the cafeteria?

No. Students will not eat meals in the cafeteria. A grab and go set up will be offered to allow meal pick up and time to consume meals in the classroom. Meals will be specially packaged for ease of pick up.

Will the meal service be provided at bus stops across the county?

Yes, during Phase II, meal service will continue as currently offered by bus stops (Mon., Wed., Fri. schedule). USDA did provide a universal waiver to feed all students regardless of eligibility. There will be no cost for lunch for students. Please note that both breakfast and lunch will be at no cost to all children ages 0-18, just as was offered in the spring. The parent will need to supply some form of identification to identify the child(ren) for whom they are picking up the meal(s) that fall in the category of 0-18 years of age.

****NOTE – The waiver that provides no cost lunch to families will expire December 31, 2020.**

Will the existing bell schedule remain the same?

Yes. There are no changes to the bell schedule at this time.

FAQ – Questions and Answers

Will the technology devices that have been issued to students remain with them if they are participating during the In-Person Hybrid Model?

Yes. Students will be required to keep the device with them as they engage in schoolwork in-person at school and online at home during the hybrid model.

If a parent purchases insurance on a device and that device is broken, does the parent have to purchase new insurance on the replacement device?

No. The family protection plan is for the year and only must be paid once. The device can be replaced up to 2 times. For questions or additional assistance on this topic contact Tammy Kemp. Email: tammy.kemp@sccpss.com