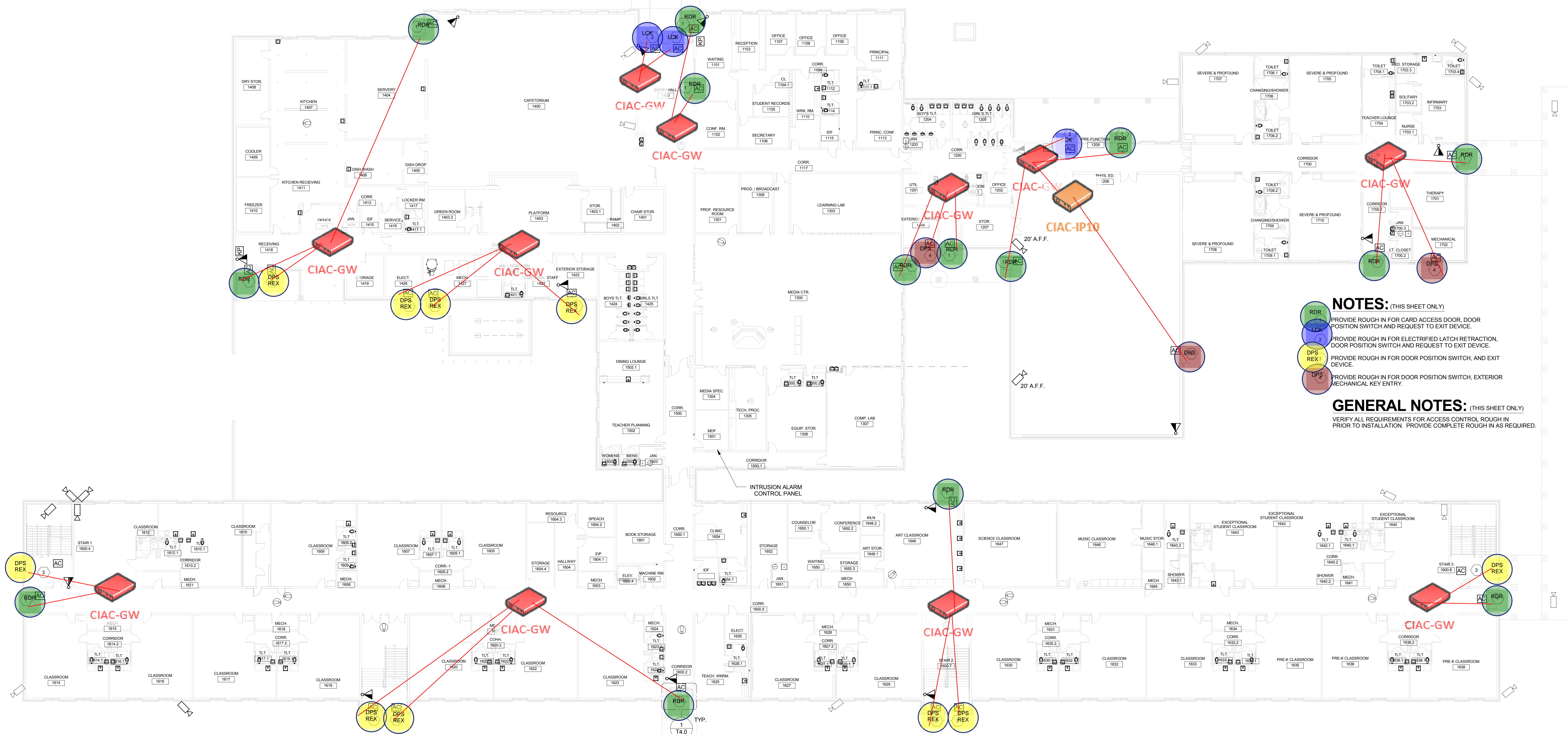
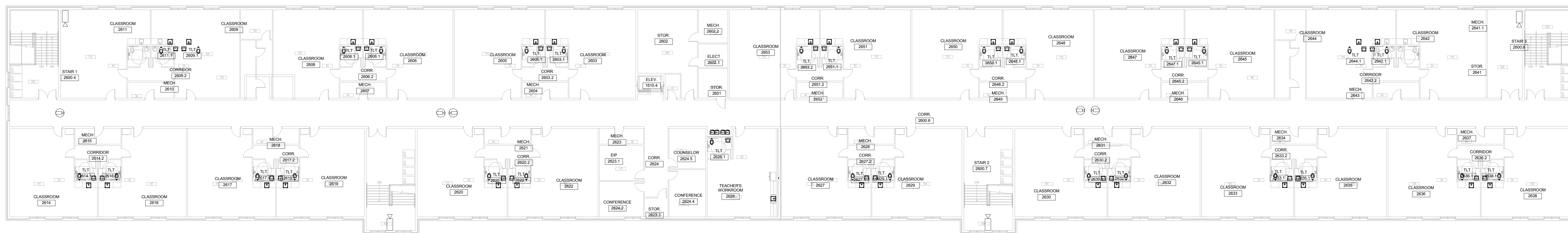


ALL RIGHTS RESERVED. COPYRIGHT 2014. DRAWINGS MAY NOT BE REPRODUCED IN ANY FORM WITHOUT WRITTEN PERMISSION.

MOUNT BOX FOR CAMERA UNDER CANOPY, ROUTE CONDUIT AND MOUNT BOXES SIMILAR TO DETAIL 2/E2.0. (TYPICAL)



1 FIRST FLOOR PLAN - SECURITY SYSTEMS
T2.0 SCALE: 1/16" = 1'-0"



2 SECOND FLOOR PLAN - SECURITY SYSTEMS
T2.0 SCALE: 1/16" = 1'-0"

NOTES: (THIS SHEET ONLY)

- RDR: PROVIDE ROUGH IN FOR CARD ACCESS, DOOR POSITION SWITCH AND REQUEST TO EXIT DEVICE.
- LCK: PROVIDE ROUGH IN FOR ELECTRIFIED LATCH RETRACTION, DOOR POSITION SWITCH AND REQUEST TO EXIT DEVICE.
- AC: PROVIDE ROUGH IN FOR DOOR POSITION SWITCH, AND EXIT DEVICE.
- DPS REX: PROVIDE ROUGH IN FOR DOOR POSITION SWITCH, EXTERIOR MECHANICAL KEY ENTRY.

GENERAL NOTES: (THIS SHEET ONLY)

VERIFY ALL REQUIREMENTS FOR ACCESS CONTROL ROUGH IN PRIOR TO INSTALLATION. PROVIDE COMPLETE ROUGH IN AS REQUIRED.

HUSSEY GAY BELL
Established 1958
329 COMMERCIAL DRIVE, SAVANNAH, GA 31406 / T-912.354.4626

NO.	DATE	DESCRIPTION

DESIGNED	DRAWN	CHECKED
GJC	GJC	WAL

DATE: 12-18-15
JOB NO. 215-2001-07
SCALE: 1/16" = 1'-0"

JULIETTE LOW ELEMENTARY SCHOOL
SAVANNAH CHATHAM COUNTY PUBLIC SCHOOL SYSTEM
15 Blue Ridge Ave
Savannah, GA 31401

OVERALL FLOOR PLANS - SECURITY SYSTEMS

DRAWING NUMBER
T2.0



FULL TIME ENROLLMENT (FTE)
850 CURRENT
900 FUTURE

DD SUBMITTAL

DATE: 12/29/2015 10:49:46 AM